

The ECOWAS Renewable Energy Facility (EREF) for peri-urban and rural areas



May 2011, Cape Verde, Praia

The ECOWAS Renewable Energy Facility (EREF)
1st Call For Proposals - 31 May to 15 July 2011

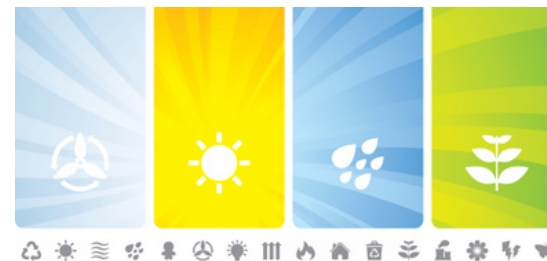


West Africa's hub for renewable
energy and energy efficiency





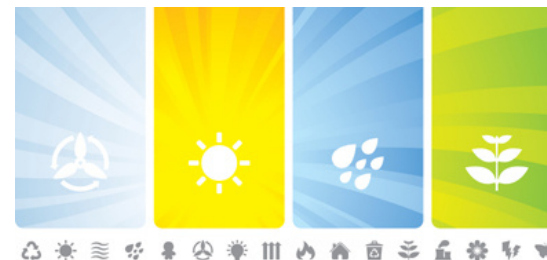
What EREF does (...)



- Grant Facility managed by the ECREEE Secretariat (ECREEE-SEC) in cooperation with its National Focal Institutions (NFIs) in West Africa
- Undertakes regular call for proposals: **1st Call from 31 May to 15 July 2011**
- Co-funds small and medium sized RE&EE investment and business projects with a minimum of 5.000 EUR and a maximum of 50.000 EUR
- Projects shall mobilize co-funding (EREF covers maximum 75% of total project costs in the case of private sector and 90% in the case of public applicants)
- Supports national or regional projects covering more than one country (rural and peri-urban areas should particularly benefit from the EREF)
- One applicant or group of partners are eligible (international applicants shall have a West African partner)
- Maximum duration of projects: 24 months



Financing Windows



Financing Window 1 - Investment Promotion

(max. 50.000 EUR co-funding per project)

- Pre-investment activities (e.g. strategic studies, measurements)
- Project development (e.g. feasibility studies, financial structuring, CDM)
- Installation of small-scale pro-poor demonstration projects

Financing Window 2 - Business Development

(max. 50.000 EUR co-funding per project)

- Business support activities for SMEs and ESCOs (e.g. business plan development, capacity development)
- Promotion of south-south/north-south business to business partnerships

Financing Window 3 - Innovative Loan Financing Instruments

(will start in second EREF phase)

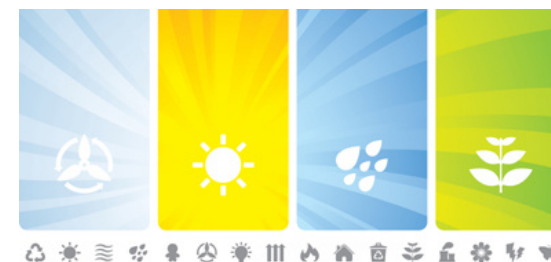


Eligibility Criteria

Eligible Countries	Eligible Applicants	Eligible Technical Solutions <i>(projects usually cover more than one option)</i>
<ul style="list-style-type: none"> • Benin • Burkina Faso • Cape Verde • Cote D'Ivoire • Gambia • Ghana • Guinea • Guinea-Bissau • Liberia • Mali • Niger • Nigeria • Senegal • Sierra Leone • Togo • Regional <i>(covers more than one country listed above)</i> 	<ul style="list-style-type: none"> • Government institutions (ministries, electrification agencies, municipalities) • Private, public or public-private companies (e.g. SMEs, ESCOs, utilities) • Individual consultants and project developers • Universities, schools, research centres, • NGOs and cooperatives 	<p>Renewable Energy:</p> <ul style="list-style-type: none"> • Renewable Energy (multi-focus) • Biomass (e.g. improved stoves for cooking, power generation) • Bio-fuels (e.g. Biodiesel, Bioethanol) • Biogas • Waste-to-Energy • Geothermal Energy • Hydroelectric Power (medium, small, micro, pico) • PV (e.g. grid/off-grid, SHS, lighting, pumping, desalination) • Solar thermal (water heating, CSP, cooling, process heat, solar cooking and drying) • Wind Energy (e.g. off/on-grid, on- and off-shore, small and large, water pumping, desalination etc.) • Wave, tidal and ocean thermal • Hybrids (indicate sources) • Mini-Grids • Storage systems (batteries, hydrogen) <p>Energy Efficiency:</p> <ul style="list-style-type: none"> • Sustainable transport • Efficient appliances • Building efficiency • Cleaner production • Transmission • Energy conservation and management <p>Other focus:</p> <ul style="list-style-type: none"> • LPG for cooking



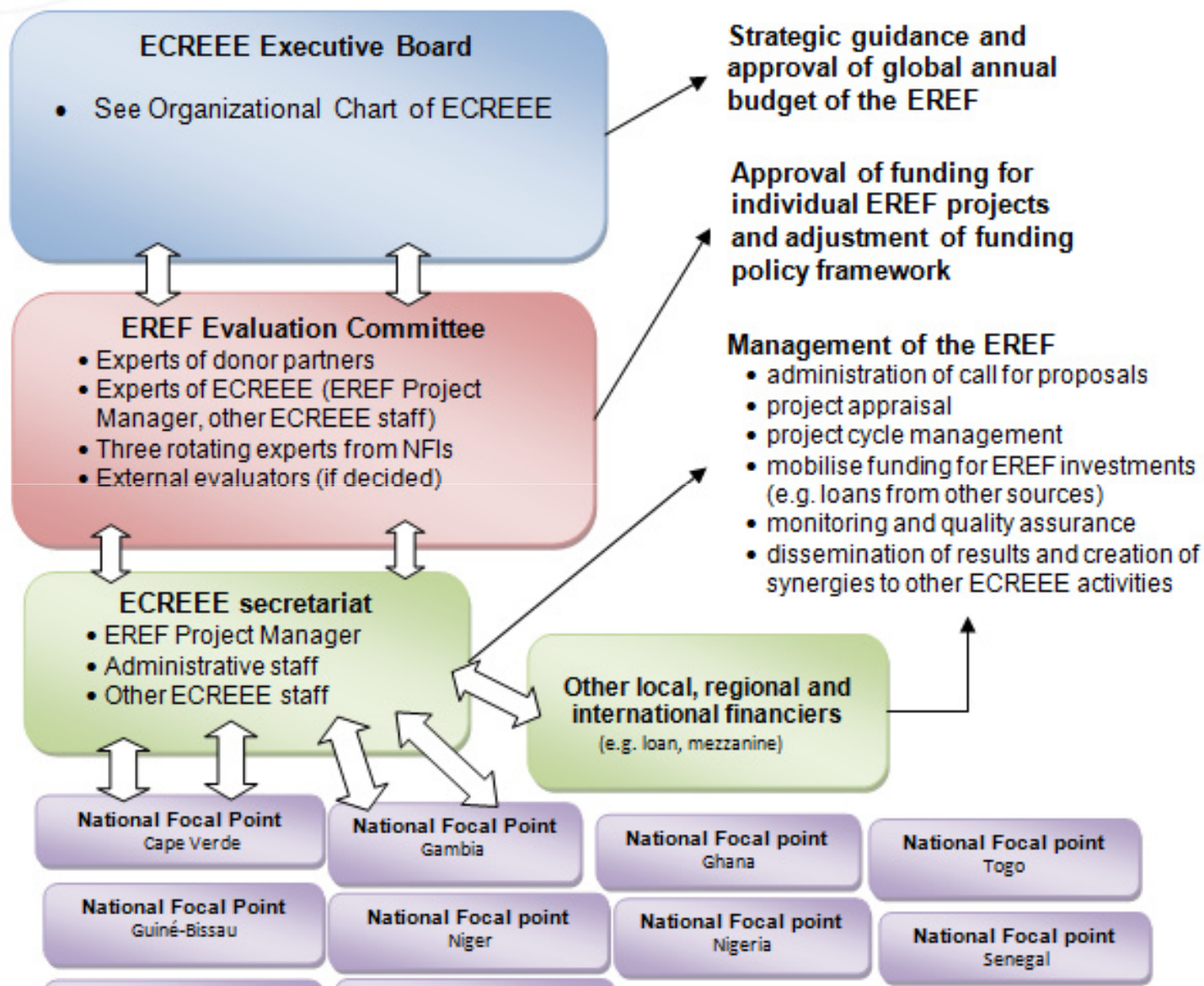
Application & Selection



Milestones of 2011 Call for Proposals (may be modified)	From	To
Adjustments of EREF funding policy and Announcement of Call	Done	Done
Preparation and Submission of EREF Concept Notes (6 weeks)	31 May 2011	15 July 2011
Promotion & information activities of ECREEE and its NFIs	31 May 2011	15 July 2011
Confirmation of receipt of concept note by ECREEE	End of July	End of July
Appraisal and administrative check of concept notes by ECREEE & NFIs – Written response to applicants on the appraisal results	August 2011	September 2011
Submission of Full Proposals and requested documentation to ECREEE by post and e-mail (6 weeks)	01 September 2011	03 October 2011
Appraisal of proposals by ECREEE and approval by the EREF Evaluation Committee	October 2011	November 2011
Notification of award (award letter, denial, waiting list) and signature of ECREEE grant contract	November 2011	December 2011
Implementation, monitoring and evaluation		Max. 24 months



Figure 1.1 EREF Organizational Structure



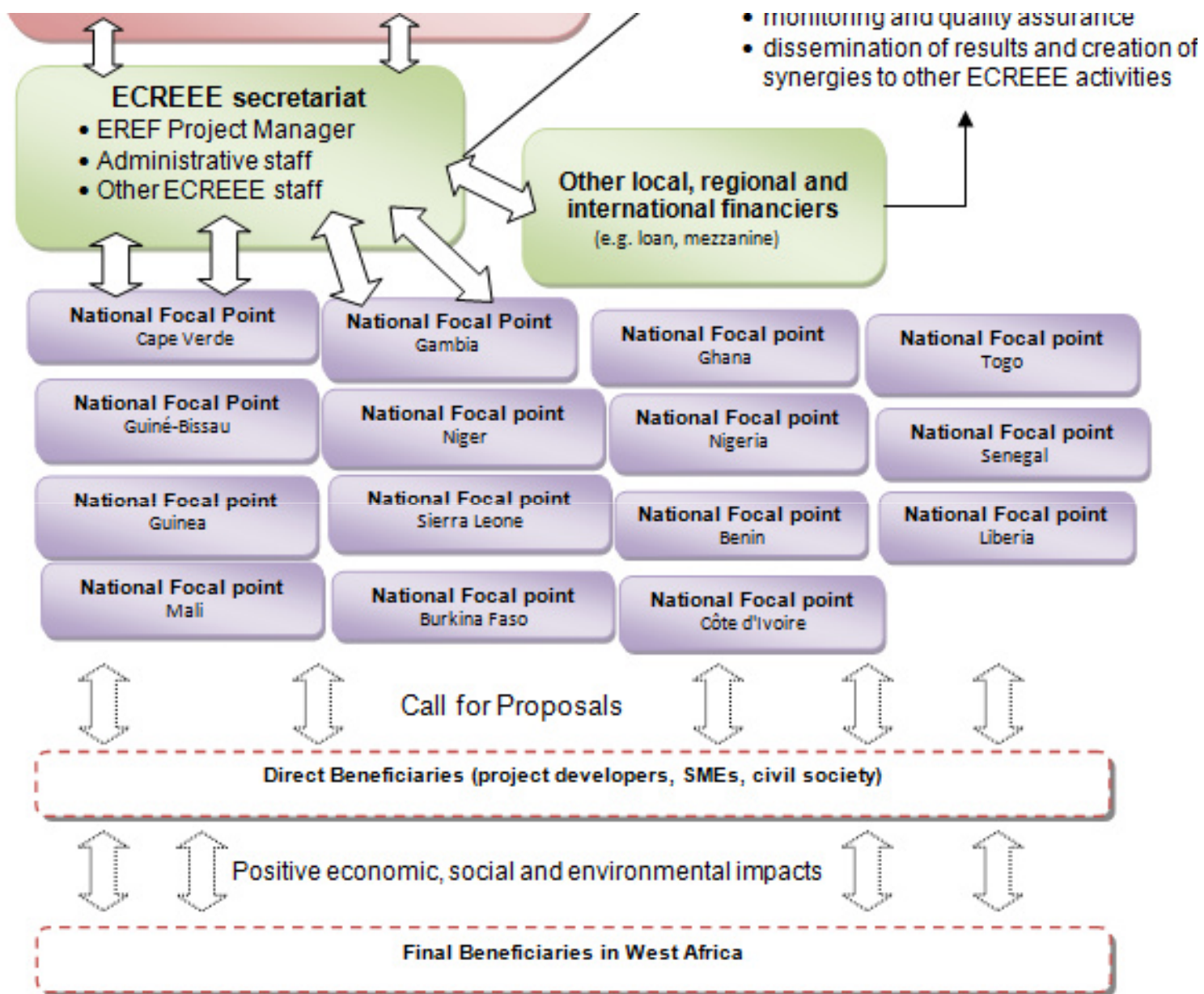
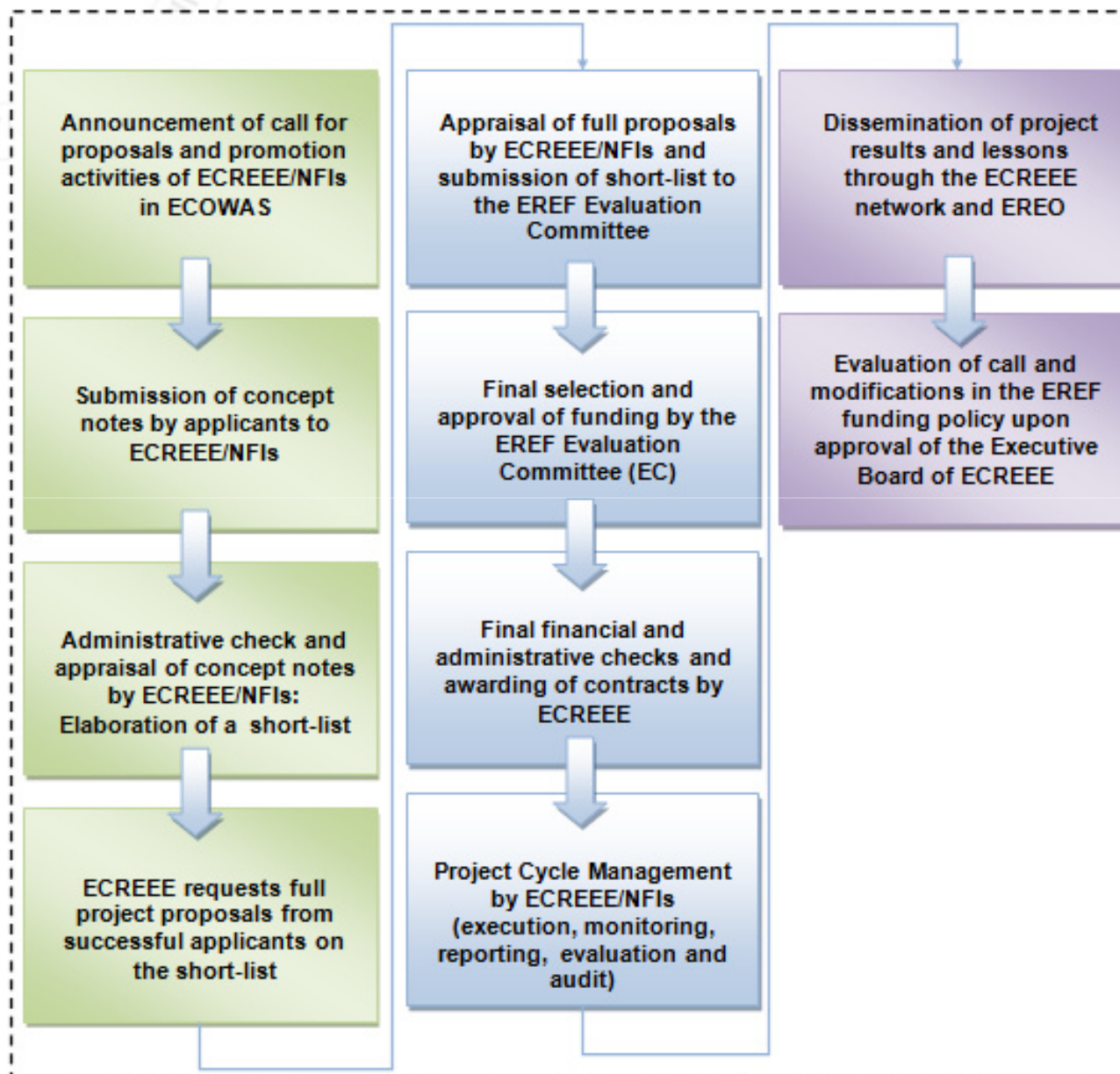


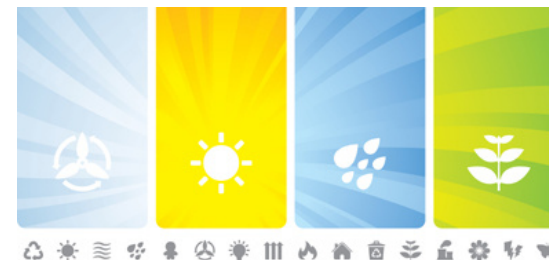


Figure 1.2 The EREF Project Management Cycle (max. 24 months)





Funding Requirements



- Project Objective for 2011 to 2014: at least 150 project (10 per country)
- Initial Funding Requirements of around 7,5 million EUR (2011 to 2014)
- ECREEE seeks funding for second call for proposal
- **EREF is supported so far by:**



Austrian
Development Cooperation





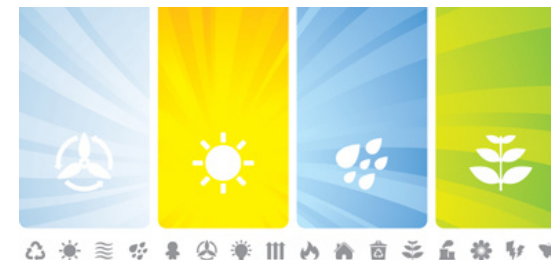
Relevance of the EREF



- **Flag-ship program** under result area 7 on RE&EE investment and business promotion of the 2011 work plan of ECREEE
- Execution of **action line 2 of the ECOWAS/UEMOA White Paper** which called for the creation of an innovation fund for RE&EE projects to raise funding for at least 200 demonstration projects and business support for local companies
- Contribution to the **Millennium Development Goals (MDGs), UN Goal on Universal Access to Clean, Affordable Energy by 2030** and the international climate mitigation objective to keep the global average temperature rise below two degrees Celsius
- ECOWAS contribution to the 2012 International Year of Sustainable Energy for All
- Responds to the urgent need for RE&EE investments in peri-urban and rural areas of West Africa and the so far **limited international and national support** (e.g. lack of national subsidy programs)
- **Need for the EREF was expressed** in questionnaires, conferences and by the NFIs



Objectives of the EREF



Specific Objectives:

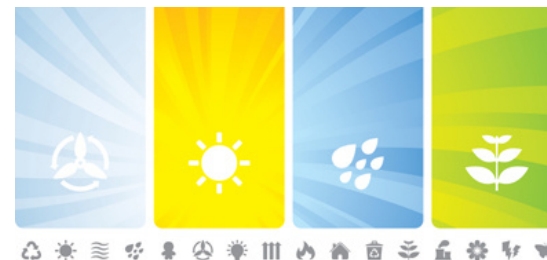
- Creation of a favourable business and investment environment which leads to accelerated deployment and use of RE&EE technologies and services in peri-urban and rural areas of West Africa

Results:

- Mitigation of financial barriers for the development and execution of small- and medium sized RE&EE investments in peri-urban and rural areas
- Capacities, knowledge base and market access ability of local RE&EE technology and service companies are improved
- Networking, knowledge exchange and awareness raising on business opportunities
- North-south and south-south Business Partnerships created



Benefits and Feasibility



- **Proven concept** already implemented in Central America, Mekong, Andean Region and Southern Africa
- **Direct beneficiaries (target groups):** project developers, SMEs and institutions
- **Final beneficiaries:** Energy end-users in peri-urban and rural areas through access to energy services and reduction of energy related negative externalities
- **High Visibility of ECREEE and its NFIs** on the ground and the private sector; strengthening of knowledge base and capacities of the ECREEE-SEC
- **Dissemination of lessons learned through the ECOWAS RE&EE Observatory** and publication of all funded activities (e.g. feasibility studies); **transfer knowledge to national levels** (e.g. feed in tariffs, tailored RE&EE investment subsidies)
- **No competition to existing finance instrument of DFIs** which target bigger projects; **potential for upgrading in a second stage (e.g. Micro-Credit Component)**
- **North-South and South-South technology and knowledge transfer**



 Regional Centre for Renewable Energy and Energy Efficiency
Centre Régional pour les Energies Renouvelables et l'Efficacité Énergétique
Centro Regional para Energías Renovables e Eficiencia Energética
www.ecreee.org



Creating a viable regional market
for renewable energy and energy efficient
technologies and services



ECREEE
operations



*Thank you! Merci!
Muito obrigado!*

*Further information can be found in the
EREF application guidelines at: www.ecreee.org*

Contact ECREEE Secretariat:

E-Mail: [renfacility\(a\)ecreee.org](mailto:renfacility(a)ecreee.org)

Achada Santo Antonio
Electra Building
C.P. 288, Praia, Cape Verde

www.ecreee.org

