

# Scaling up utilization of GBEP SI in ECOWAS

## Recommendations based on lessons learned

*ECOWAS/GBEP Workshop*  
*Praia - Cape Verde*  
*7-8 November 2013*

**Emiel Hanekamp, senior expert  
profitable and responsible biomass**

© Partners for Innovation



## Presentation outline



1. 5 pilot projects on testing GBEP Sustainability Indicators
2. Results Ghana pilot
3. Results ECOFYS study
4. Recommendations
5. Financing of Technical Assistance (EU Climate Support Facility)
6. Discussion

# 5 pilot projects on testing GBEP Sustainability Indicators

## 5 pilot projects



### 5 countries:



Colombia



Ghana



Netherlands

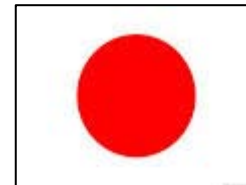


Germany



Indonesia

Additional a project-scale pilot in Japan



# Lessons learned Ghana pilot project

***“A pilot project approach is very valuable as a first step in a country”***

- Pilot should be aimed at both the technical aspects of the indicators as well as the institutional embedding
- Down to earth working with (a selection of) the indicators will:
  - Enhance capacity (all stakeholders) to work with the SI;
  - Improve communication and exchange of information between stakeholders;
- This learning by doing approach seems to be the most efficient.

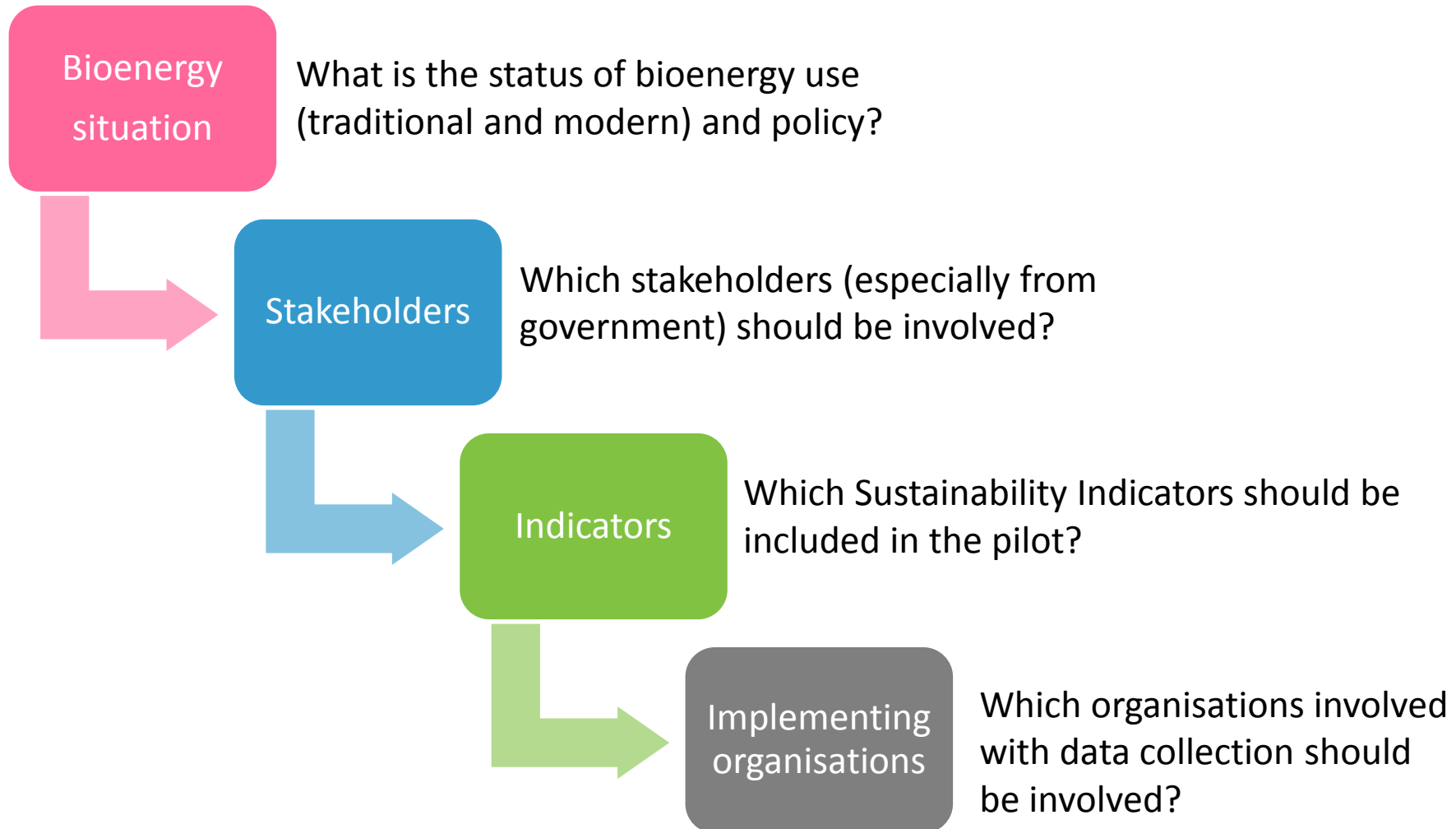
***For a sensible and realistic implementation of the GBEP methodology, country specific modifications are needed:***

- Stakeholders involved
- Selection of indicators and sub-indicators
- Data requirements and data collection methodologies

***GBEP SI are found to be important for fact based policy development, evaluation and monitoring***

***Although modern bioenergy is in an early stage of development in Ghana all indicators seem relevant in the medium to long run***

# Results Ghana pilot project





# Lessons learned in testing the GBEP sustainability indicators



### Recommendations for countries implementing the GBEP SI

- Ensure all relevant stakeholders are involved through the process and can take ownership of indicators.
- Focus implementation on creating or improving the capacity of national institutions.
- Avoid discounting indicators too early; indicators are interrelated and should preferably be used as a whole.
- Align implementation as much as possible with existing data and data collection infrastructures.

## Overall implementation

General guidance for (pilot) projects to implement GBEP indicators

## Cross-cutting aspects I

- Highest priority: attribution and geographical scope.
- Other aspects to address:
  - Feedstock coverage
  - Way of presenting indicators.

## Cross-cutting aspects II

Development of “factors”

## Further development of specific indicators

Short term

Medium term

Long term

## Recommendations for further implementation of the GBEP SI



### Further guidance could be developed on:

- Methodologies how to adapt existing data to GBEP requirements
- Attribution of data to bioenergy
- Allocation of impacts to co-products, for wastes and residues and for multiple products from the same crop
- Geographical scope of indicators, taking into account cross-border issues (e.g. watersheds) and imports/exports
- How to deal with data gaps;
- How to present the indicator results, to ensure consistency, including use of maps

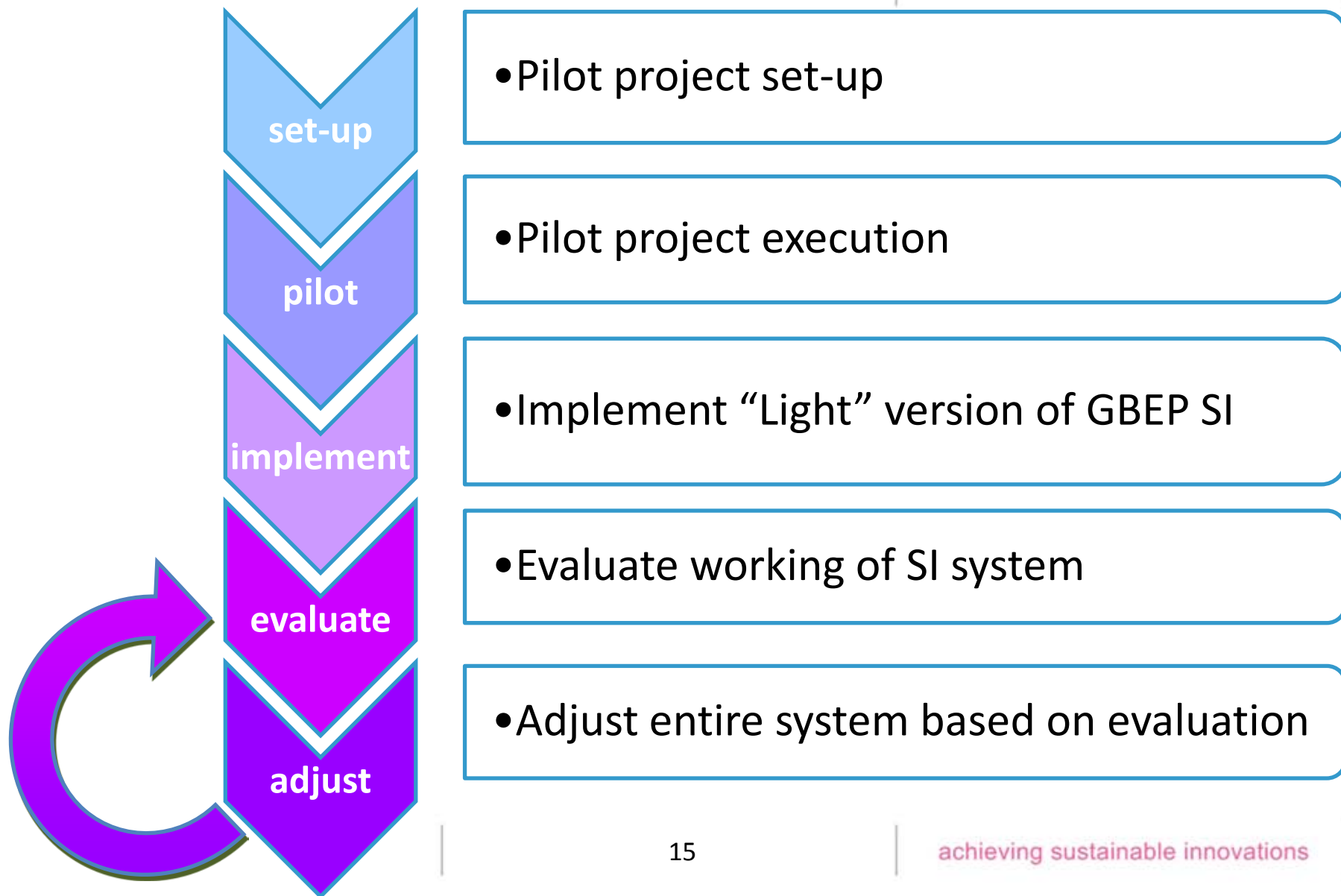
## Recommendations for further implementation of the GBEP SI



- Create an international GBEP SI expert exchange platform:
  - technical experts
  - Policymakers
- For indicators with currently low data availability (and quality), GBEP could develop “factors” (similar to the concept of emissions factors).

# Recommendations for countries interested in implementing the GBEP SI

## Recommendations for countries interested in implementing GBEP SI



## Recommendations for other countries interested in implementing GBEP SI

### set-up

#### **Pilot project set-up:**

Focus on firm local involvement/support and project plan development. Establish: a project team consisting of the coordinating organisation (preferably the government organisation responsible for bioenergy policy) and supporting government and research organisations with expertise on (the most relevant) bioenergy related topics.

Set-up a policy stakeholder group with all key government organisations. Time needed: 6 months.

### pilot

#### **Pilot execution:**

Focus on studying the current situation.

Assess: relevance and priority of (sub)indicators), current data collection methodology and relation with GBEP methodology, indicator scope, data collection practices and infrastructures (capacities and funding), expected implementation costs.

Time needed: 1 year.



## Recommendations for other countries interested in implementing GBEP SI

imple-  
ment

### **Implement “Light” version of GBEP SI:**

Focus on learning by doing; collect data, calculate/compose indicators and report the indicators.

Develop light version of GBEP methodology and data collection strategy. Set-up data infrastructure (hard and software) including capacity building. Support policymakers using SI in formulation, monitoring and evaluation  
Time needed: 2 year

evaluate

### **Evaluate working of SI system after 2 years in operation:**

Focus on: "Does the current system fulfil its needs?"

Extend the system with more sub-indicators, extended scope or otherwise. Or reduce the coverage and scope if desired. Focus on defining the system as needed by the policymakers.

Time needed: 3 months

## Recommendations for other countries interested in implementing GBEP SI



**adjust**

### **Adjust entire system based on evaluation**

Implement the adjusted system as defined in the evaluation.

Support policymakers in using the indicators in policy formulation and monitoring

Time needed: 1 year



**Repeat evaluation and adjustment on a regular basis**

### The EU Climate Support Facility

The EU Climate Support Facility offers expert support to organisations in ACP countries for short-term (customised) Technical Assistance and training related to Climate Change.

- Training, workshops, capacity building
- Project identification/formulation and feasibility studies
- Assessment of projects and help to access funding
- Policy development, strategies and roadmap preparation

# The EU Climate Support Facility



- Anyone based in ACP countries can apply for support
- Procedures are very quick and easy (within 4 weeks work starts)
- Approximately 50 expert days of support
- More information:

[www.gcca.eu/intra-acp/climate-support-facility](http://www.gcca.eu/intra-acp/climate-support-facility)

Or contact Partners for Innovation:

Emiel Hanekamp

[e.Hanekamp@partnersforinnovation.com](mailto:e.Hanekamp@partnersforinnovation.com)

0031206200511 or 00310651542539

**Thank you for your attention!**

**Partners for Innovation BV**

**Emiel Hanekamp**

**+31 20 62 00 511**

**[e.hanekamp@partnersforinnovation.com](mailto:e.hanekamp@partnersforinnovation.com)**